



Version 1.6



## What is MusicalCompanion?

MusicalCompanion is an application to manage CDs, MDs, MCs or Memory Sticks. You can store artist, album title, category, year released and a long note for each media. And there are four pages to list all tracks of an album.

You're able to filter the list of albums by category and search for a certain album using the Palm OS build in find function.

## Requirements

- Palm OS 3.5 or better
  - at least 150 kB free memory
  - Advanced Library (sorting, messages)
  - MemCard Storage Library (access external memory cards)
  - CommonDialogs Library (extended dialogs and note fields)
- The libraries are provided by the installer.

Palm OS, Palm Computing, Graffiti, HotSync, iMessenger, MultiMail, Palm.Net, PalmConnect, PalmPoint, PalmPrint, and the Palm Platform Compatible Logo are registered trademarks of Palm, Inc. Palm, the Palm logo, the HotSync Logo, PalmGear, Palm Powered, the Palm trade dress, PalmSource, Smartcode, and Simply Palm are trademarks of Palm, Inc.

All other brands and product names may be trademarks or registered trademarks of their respective owners.

## What's new?

- Total of albums in category
- List uses virtual Graffiti area
- Libraries updated

## What's installed?

### **File**

MusicalCompanion  
MCFilter  
MCCategory  
MCList

### **Function**

the application  
stores data for list view (not editable by the user)  
your list of categories  
your media list

### **Additional library**

PDATAAdvUtilsLib  
PDATMcStoreLib  
PDATCDLib

### **Function**

Sorting, messages  
Access external cards  
Extended dialogs and note fields

You can move the libraries to flash memory, but before the next update you have to move them back to normal memory. There may be newer version shipped then, which require to overwrite those installed. If you move the libraries to external cards, MusicalCompanion won't work correct any more!

## Register

* Not registered *	* Not registered *
<p>To register this app, please go to <a href="http://www.palmgear.com/register">www.palmgear.com/register</a> and enter the Product ID 39076. The price for one license is \$US 6.00.</p> <p>Please enter your device name on the order form. Tap on "Enter registration code" to see it (it's case sensitive!).</p> <p><input type="button" value="Continue trial"/> <input type="button" value="Enter registration code"/></p>	<p>To register this app, please go to <a href="http://www.palmgear.com/register">www.palmgear.com/register</a> and enter the Product ID 39076. The</p> <p><b>Registration</b></p> <p><b>Enter your registration code exactly as provided:</b></p> <p>Name: <input type="text"/></p> <p>Code: <input type="text"/></p> <p><input type="button" value="OK"/> <input type="button" value="Cancel"/></p>

As long as MusicalCompanion is not registered, this screen will appear first when starting the app. Tap on "Continue" to evaluate longer or on "Enter registration code" to enter your personal registration code.

**Please note!** Name and Code are case sensitive, so "MartinL" and "martinl" are two different names. When receiving the registration code after ordering, enter the data exactly as shown in the email.

## Main screen

### Main



Edit album  
Find album  
View list

After launching the application you'll always get to the main screen. Tap on one of the words below the line to get access to the functions of MusicalCompanion:

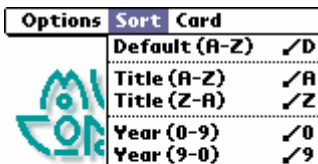
*Edit album:* enter / edit records  
*Find album:* search for an album  
*List view:* open the list of albums

Some basic settings can be made through the menu or using the command stroke:



Edit album  
Find album  
View list

*StoneCold theme* - changes the colors of some buttons and menu items of MusicalCompanion to a grey-blue  
*Standard theme* - the default Palm OS colors  
*About...* - version and contact information



Edit album  
Find album  
View list

*Default sort* - Sorts the database first ascending by artist and each album for this artist ascending by year  
*Title (A-Z)* - sorts the database ascending by title  
*Title (Z-A)* - sorts the database descending by title  
*Year (0-9)* - sorts the database ascending by year  
*Year (9-0)* - sorts the database descending by year



Edit album  
Find album  
View list

*Backup* - Writes your database to memory card (see below)  
*Restore* - Reads the the database back to main memory (see below)  
These commands only work on devices with memory card slots!

## Edit screen

**Edit album**

**Artist:** Deep Purple

**Title:** In Concert With The London Symphony

**Cat.:** Classic Rock

**Year:** 1999

**Note:**

1 2 3 4

H N L D < > << >>

This is where you enter data for a new album or edit existing ones.

To enter artist and title of the album you see two lines, but you can write as much as you want. It is strongly recommended to enter the artists name "lastname, firstname" as the database is sorted automatically by this field.


**Note:** Please keep in mind that sorting is case sensitive and every character is valid. So "Artist", "artist" and " Artist" are three different names!




The next field is a popup. If you didn't enter your own categories, the list will be empty. To edit categories tap on the small paper icon behind "**Cat.:**" (see below for details).

The buttons 1 - 4 open screens where you can enter the tracks of an album (see below for details).

The icons at the bottom of the screen mean (from left to right):

- Goto main menu
- New entry (clears all fields)
- Open list view (see below)
- Delete the current record
- Jump to the first record in the database
- Goto previous record
- Goto next record
- Jump to last record

You can call more database functions from the menu or with the command stroke  :

Edit	Record	Goto
Artist:	New <input checked="" type="checkbox"/> N	
	Delete <input checked="" type="checkbox"/> L	
	Duplicate <input checked="" type="checkbox"/> P	
Title:	Beam <input checked="" type="checkbox"/> B	
	London Symphony	
Cat.: 	▼ Classic Rock	<b>1 2</b>
Year:	1999	<b>3 4</b>
Note:		
.....		
.....		
 		

*New* - create new record

*Delete* - delete current record

*Duplicate* - duplicate the current record. This helps if you have to enter many albums which have similar data (like artist name) and works for all fields of the record.

*Beam* - beams the current record to another Palm user. Please keep in mind, that the other person has to have MusicalCompanion installed too. Data for category is **not** transfered. This is no bug as MusicalCompanion can not know which categories the other person has on their device.

Edit	Record	Goto
Artist: Deep P	Tracklist 1 <input checked="" type="checkbox"/> 1	
	Tracklist 2 <input checked="" type="checkbox"/> 2	
	Tracklist 3 <input checked="" type="checkbox"/> 3	
	Tracklist 4 <input checked="" type="checkbox"/> 4	
Title: In Conc London	First record <input checked="" type="checkbox"/> 0	
	Last record <input checked="" type="checkbox"/> 9	
Cat.: 	▼ Cla	
Year: 1999	Find album <input checked="" type="checkbox"/> F	
Note:		
.....		
.....		
 		


*Tracklist 1 - 4* - opens the different Tracklist screens

*First record* - goto first record

*Last record* - goto last record

*Find album* - search for an album

## Edit categories

Edit categories 	
Classic Rock	<input type="button" value="New"/>
Classical	<input type="button" value="Edit"/>
Folk	<input type="button" value="Del"/>
Hard Rock	
Heavy Metal	
Misc	<input type="button" value="Sort"/>
Other	
Pop	
Psych. Rock	
Relax	
Blues	
Rock	<input type="button" value="Done"/>

*New* - create a new record

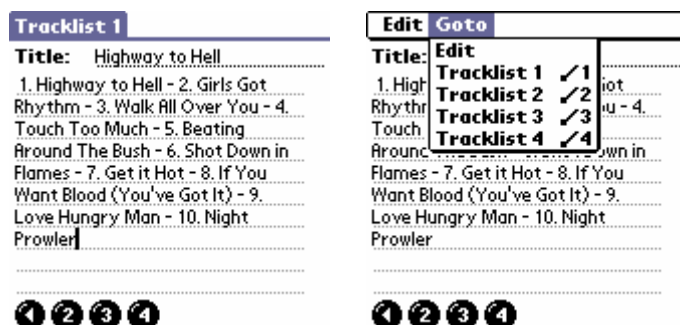
*Edit* - edit the current record

*Del* - delete current record

*Sort* - sort records ascending alphabetically

The two arrows move the marked record up or down, so you can sort the list by your personal preferences.

## Tracklists



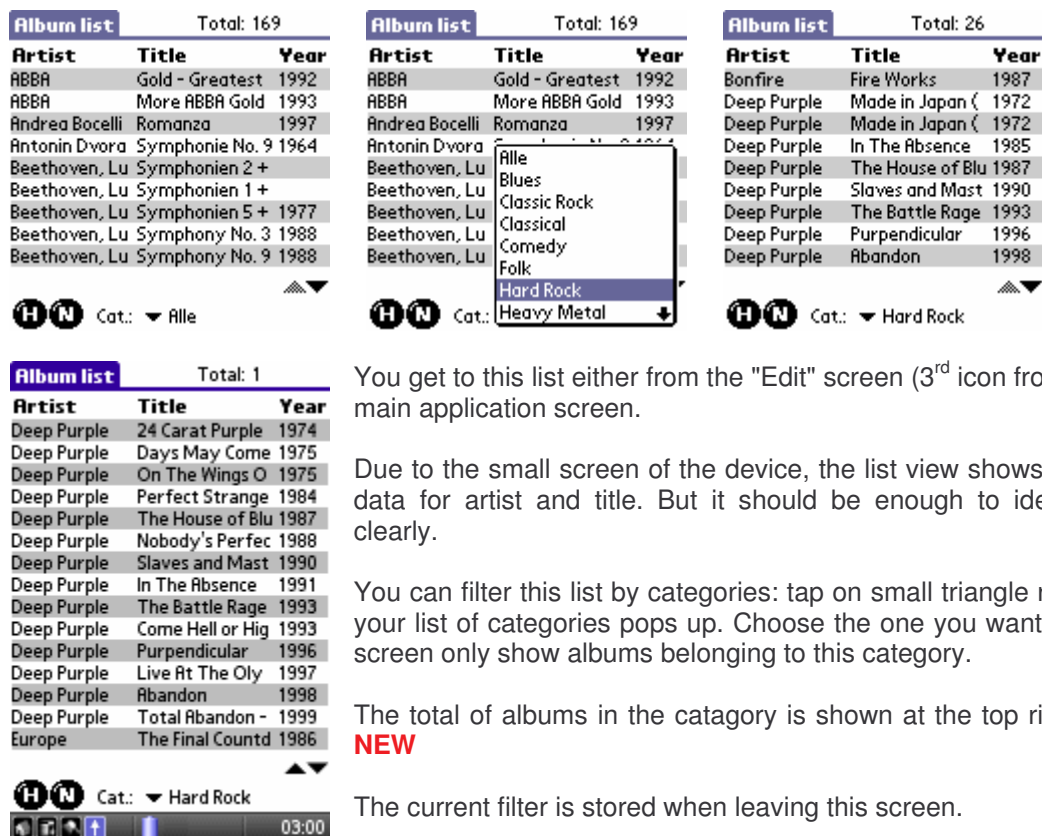
On each of the four Tracklist screens you can enter the tracks for a CD.

The "Title" field is read only, so you can't edit that data.

The left arrow button at the bottom brings you back to the "Edit" screen. With the number buttons you can navigate through the screens. This can also be done using the menu.

## Album list

**CHANGED**



You get to this list either from the "Edit" screen (3<sup>rd</sup> icon from the left) or the main application screen.

Due to the small screen of the device, the list view shows only a part of the data for artist and title. But it should be enough to identify each album clearly.

You can filter this list by categories: tap on small triangle right to "Cat.:" and your list of categories pops up. Choose the one you want, tap on it and the screen only show albums belonging to this category.

The total of albums in the category is shown at the top right of the screen.

**NEW**

The current filter is stored when leaving this screen.

When you tap on an entry it is opened on the Edit screen. Use the small up and down arrows or the hardware scroll buttons of your device to scroll through the list.

On devices with a virtual Graffiti area the whole screen is used to show you more records. **NEW**

The two icons at the bottom of the screen mean:

- goto main menu (H)
- goto entry screen (N)

## Find function

This is provided by the development IDE and works a bit unusual:



To search MusicalCompanion's database you have to open one of the edit screens (albums or categories), tap on the find button (bottom right next to the Graffiti area), enter the search phrase (this is not case sensitive) and then tap "OK".



The result screen will show the **first** matching record. Tap on that line and the entry is opened on the edit screen.

If you get a "No openDB 0 0" error you didn't start on an edit screen.

As the screenshots show, this function is tested and works with FindHack too.

FindHack (shareware) is an enhancement of the build in find function and can be found at <http://fpillet.free.fr> or <http://perso.wanadoo.fr/fpillet/>

## Find album

**Find album**

Artist	Title	Year
AC/DC	Highway to Hell	1979
AC/DC	Back in Black	1980
AC/DC	Live	1992
AC/DC	Stiff Upper Lip	2000
Black Crowes	Shake Your Mon	1990
Black Crowes	The Southern H	1992
Black Crowes	The Raven	1993
Black Crowes	Live At The Gree	1999
Blackmore's N	Shadow Of The	1997

H E ? live in

**Find album**

Artist	Title	Year
AC/DC	Highway to Hell	1979
AC/DC	Back in Black	1980
AC/DC	Live	1992
AC/DC	Stiff Upper Lip	2000
Black Crowes	Shake Your Mon	1990
Black Crowes	The Southern H	1992
Black Crowes	The Raven	1993
Black Crowes	Live At The Gree	1999
Blackmore's N	Shadow Of The	1997

H E ? live in

**Find album**

Artist	Title	Year
Deep Purple	Live in Japan	1972
Rainbow	Live In Germany	1976 /
ZZTop	Live In Essen	1980

H E ? live in

**Find album**

Artist	Title	Year
AC/DC	Live	1992
Black Crowes	Live At The Gree	1999
Deep Purple	Live in Japan	1972
Deep Purple	Live At The Oly	1997
Free	Live	1971
Hendrix, Jimi	Live At Woodsto	1969
Rainbow	Live In Germany	1976
Status Quo	Live	
Stevie Ray Va	Live With Double	1984
ZZTop	Live In Essen	1980

H E ? live

Different from the 'Find' function described above, this screen lets you search for an album or albums with similar titles.

Enter the title of an album exactly like it is stored in the database. It's not case sensitive. You don't have to enter the whole title, a part of it will do.

The search phrase is stored when you leave this screen.

On devices with a virtual Graffiti area, you may hide it to see more records.

### NEW

The icons mean

- goto main screen
- goto "Edit" screen
- search (questionmark)
- clear search phrase (the right arrow)



## Using external cards

From the menu of the main screen you can backup and restore your booklist to external cards.

### Backup

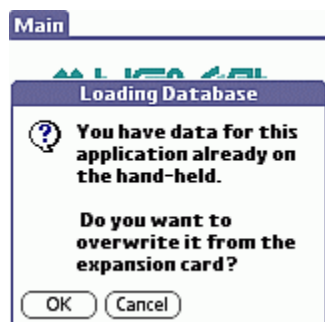


When calling the backup command, you can change the memory card, if necessary. Doing so, will not exit MusicalCompanion. Tap on "OK" when you're ready and the data is saved.

You will find the file "MCList.pdb" in the "/PALM/MusicalCompanion" folder.

### Restore

This command lets you change the card too, before reading the list. If data on your device will be overwritten, you'll get the following error message:



Only if you're sure that the list on your card is more up to date than the one on your handheld, tap on "OK". Otherwise tap on "Cancel".

## BackupBuddy certificate



MusicalCompanion is "BackupBuddy certified".

This means that databases are always saved to your PC, re-installed correctly after a hard reset, and when used together with BackupBuddy, saved faster during HotSync.

You can download a trial version of BackupBuddy at BlueNomad:  
[http://www.bluenomad.com/bb/prod\\_backupbuddy\\_download.html](http://www.bluenomad.com/bb/prod_backupbuddy_download.html)

## Known bugs and limitations

- none at the moment

## Credits

Thanks go to

- Jolanda Luijmes who helped with ideas, did some beta testing ;-) and sent me her list of CDs for testing

MusicalCompanion is created using

- PDAToolbox ([www.pdatoolbox.com](http://www.pdatoolbox.com))
- PDAT Advanced and Libraries by Rick Sands ([www.sandsusa.com](http://www.sandsusa.com))
- Icons by Stargard Software and Icon Land
- Semiramis font
- Nutshell Installer by Ecamm Network

## Contact

Email: [support@mlindert.de](mailto:support@mlindert.de)

Web: [www.mlindert.de](http://www.mlindert.de)

## Disclaimer / Licence / Warranty

The software and related documentation are provided "AS IS" and without warranty of any kind and the author expressly disclaims all other warranties, express or implied, including, but not limited to, the implied warranties of merchantability and fitness for a particular purpose.

The software is protected by copyright laws and international copyright treaties, as well as other intellectual property laws and treaties. You may only use the software on one device. The software is licensed, not sold.

You may not reverse engineer, decompile, or disassemble this software.

By installing and opening the software you are agreeing to the terms set by this license. If you do not agree to this license do not use this software.

## Appendix

### **Version history**

1.6 - 08/25/2004

- Total of albums in category
- List uses virtual Graffiti area
- Libraries updated

1.5 - 12/15/2003

- Search for album title
- Two lines to enter artist
- Changed icon name to "MusiComp"
- Internal changes to make it compatible with future OS versions

1.4 - 09/05/2003

- Hi-Res Icon
- Sorting from menu of Main screen
- Filter of list view is stored
- Internal changes
- Layout changes
- Libraries enhanced
- Changed registration method

1.3 - 04/14/2003

- Bigger application icon
- Easier access to the tracklists
- Easier editing of categories
- Alternate row color in lists
- Scrolling up in lists works correct
- Some layout changes
- Libraries enhanced and bug fixed

1.2 - 01/10/2003

- MusicalCompanion is OS 5 compatible
- Edit categories from Main screen
- Default sorting from Main screen
- Backup to / Restore from memory cards
- Shows text on search results
- Layout corrected
- Icon for greyscale devices
- Libraries enhanced and bug fixed

1.1 - 08/27/2002

- Categories are accessible only from the Edit screen
- cursor gets focus on first field on edit screens
- extended menu
- scrollbar on note field
- Tracklists for up to four CDs
- ability to sort the databases
- small icon (visible in list view)
- color icons are transparent (for launchers with background bitmap)

1.0 - 12/15/2001

- first public version