

# GrxView Manual

## Getting started with GrxView

### Main features

GrxView is small and handy yet full-featured image viewer.

GrxView runs on a wide handheld range running Palm OS 4 or greater. Your device can have any screen resolution and orientation (160x160, 320x320, 320x480 portrait and landscape). And yes, screen rotation is also supported by GrxView as well as Thumbnail View mode of scanning pictures.

GrxView supports more native image formats than any other Palm image viewer: JPEG (including progressive), GIF, PNG, BMP, PCX and TIFF (Pro version only). Multi-paged TIFF is also supported. You can choose yourself, which components to install. For example, if all of your images are JPEG, then you can install only GrxView with JPEG plug-in and save some of your handheld's memory.

Also GrxView supports JPEG images saved on the handheld's memory (created by other image viewers like Palm Photos and SplashPhoto).

GrxView can zoom and rotate images and fit them to the screen as well as run a slideshow. You can rename or remove your image files, copy or move them to any folder including internal memory, create a new folder on the memory card, send or beam images to another device. Also you can set the tap settings to explore files and folders easily using File List Options dialog window.

GrxView supports private images and global security options.

Also GrxView features Exchange Manager support, which allows you to receive and view images from Bluetooth, IR connections and email attachments (tested with SnapperMail and VersaMail). It can be set in Exchange Options dialog window.

Minimum requirements for your handheld are: Palm OS 4 or greater, 100K free memory, color screen, memory card.

### Installation



Download GrxView/GrxView Pro **zip** or **sit** archive.

Unpack the archive and install program file (grxview.prc/grxviewpro.prc) onto your Palm handheld using your palm installation tool, for example HotSync.

On first run after installation you will see *Installation Wizard* which will allow you to install plug-ins for different image formats.

Plug-ins can be installed to handheld or memory card. Select it from *Install to* popup list.

## How to copy images to the handheld?

Often you have some images on your desktop computer, but would also like to have them on your handheld computer. This section describes how can you copy images from desktop computer to handheld, if the handheld has an expansion card.

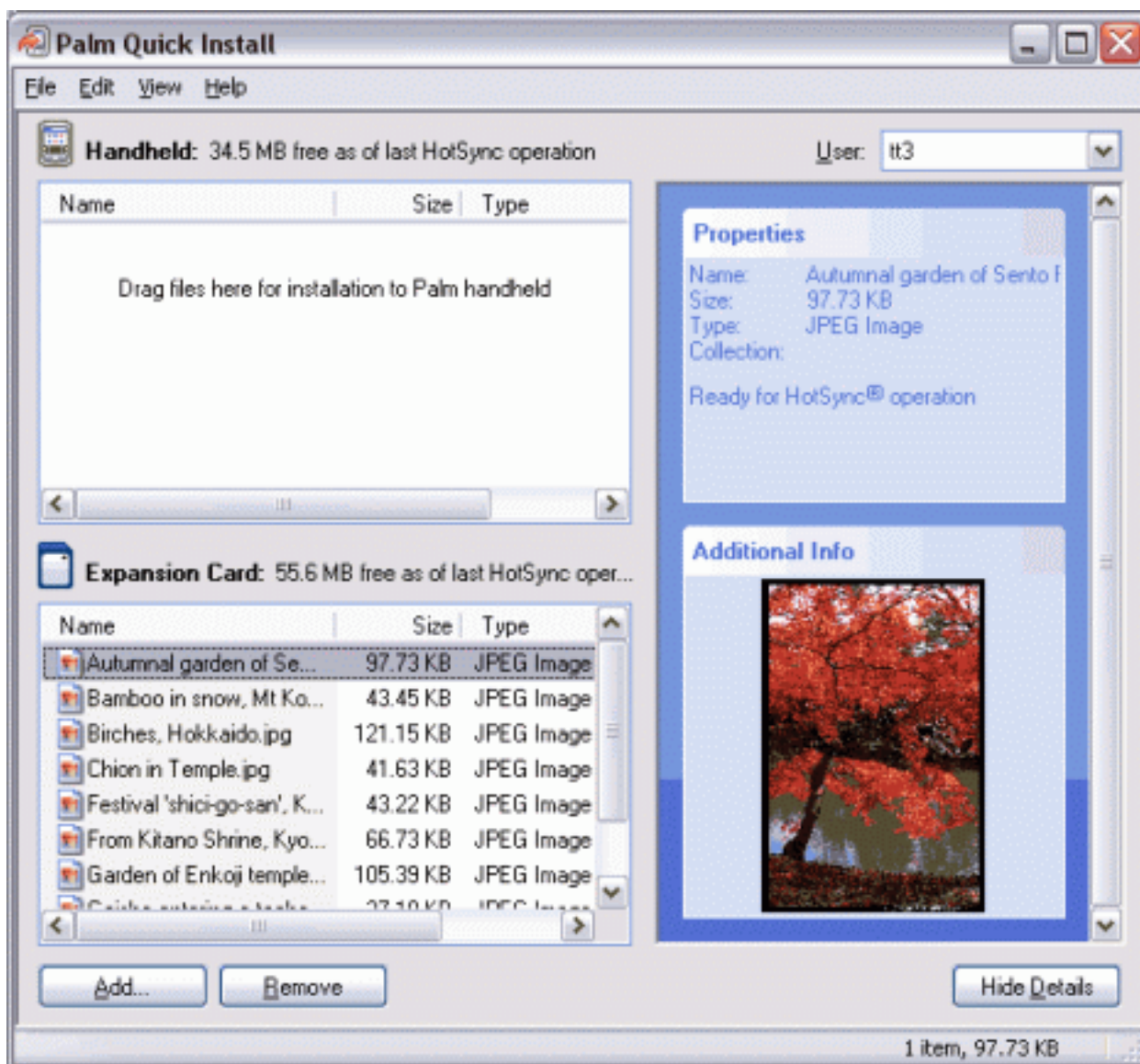
Expansion card is a small flash-memory card, which is inserted into the handheld's expansion slot. It can be Secure Digital Card, Multimedia Card or other - it depends on handheld's model.

## Using Palm Quick Install

The easiest way to copy images from the desktop computer to the handheld's expansion card is using synchronization software, like Palm Desktop or Palm Quick Install (this software is shipped with handheld itself on special Installation CD-ROM disk).

With Palm Quick Install you have just to drag&drop your images to Quick Install's window. Do not forget to choose correct destination: not **Handheld**, but **Expansion Card**.

After this put your handheld into the cradle and push the **HotSync** button. All images will be copied to the Expansion Card.



## Using memory card reader

Card reader is a small device, which can be connected to a desktop computer (or laptop) via USB or other communication cable. You can put your memory card into this device. For the operating system (Windows, for example) the card will be displayed as Removable Drive.

All you have to do is to copy your images onto this drive, then take the memory card out of the card reader and put it into your handheld's expansion slot. After this you can view your images on the handheld using GrxView.

## Card-mounting software

If you neither have a flash card reader device, nor want to use standard synchronization software, you can go other way. There are few programs, which make it possible to mount the expansion card of the handheld directly to a desktop computer. In this case handheld's expansion card is displayed as new Removable Drive of your desktop computer. Afterwards you can copy your images on this disk the same



way you do with a memory card reader.

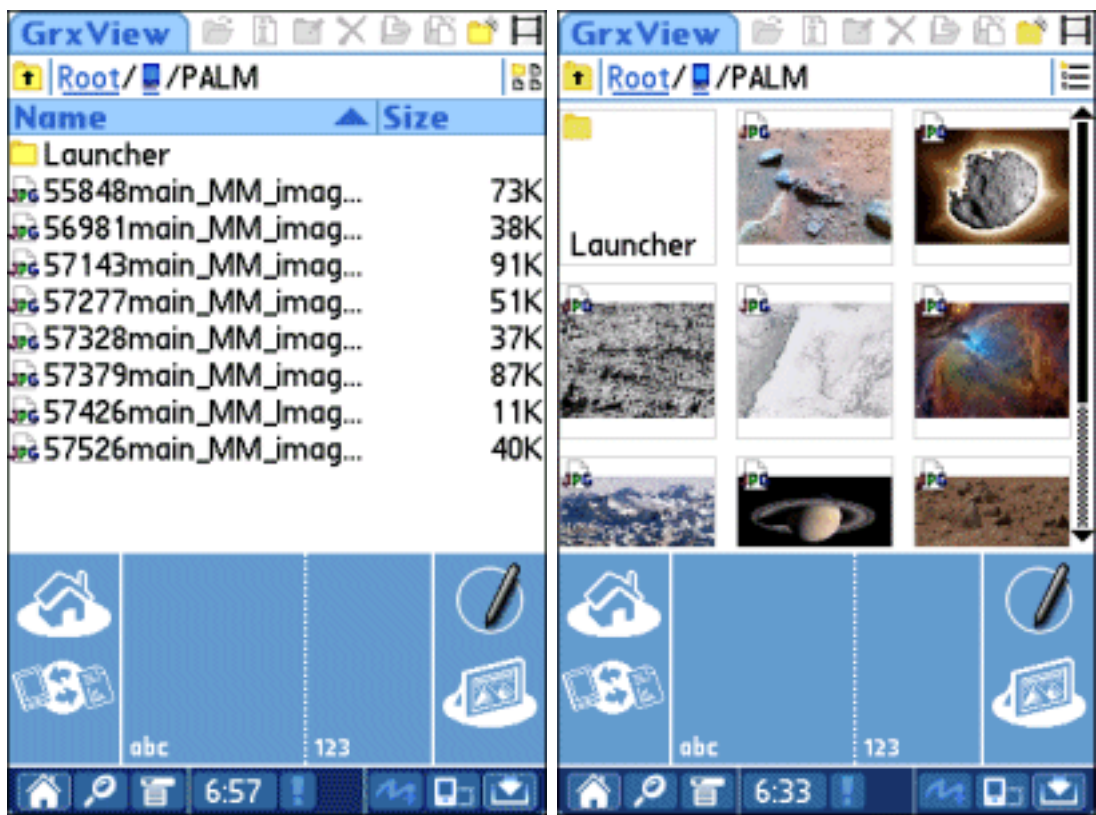
For example, you can use Softick Card Export II to access SD/MMC card inserted into Palm OS device as a logical disk on the Windows desktop. Card Export II emulates USB Mass Storage device (like USB card reader, USB flash drives etc) and doesn't require any additional drivers on modern desktop systems. With Card Export II you can transfer Palm OS applications, images, mp3 files to the card or just use the memory card as a floppy for any data. After connecting card it accessible as another removable disk in Windows Explorer.

## Using GrxView

### File List View

First thing you see, when running GrxView is File List View. Here you can see the expansion card, all the folders and images in it.

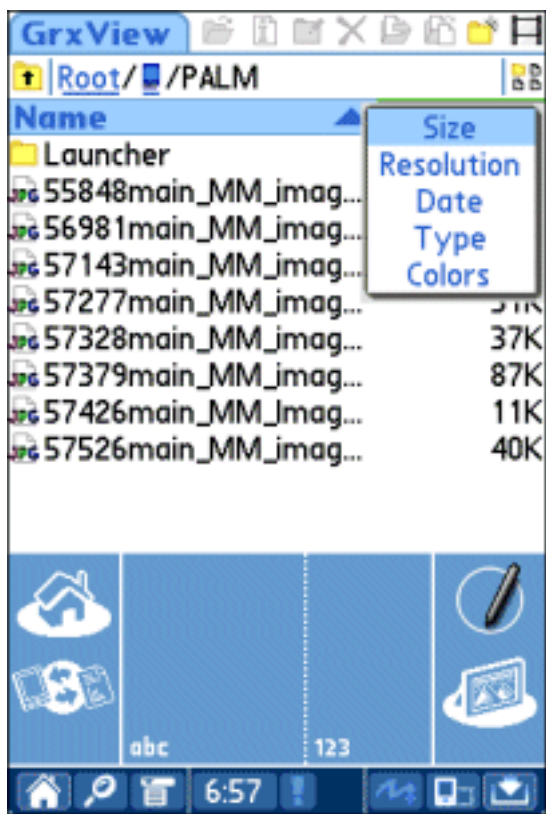
File List View has two modes: simple mode and thumbnail mode. You can switch between them by tapping on  (being in simple mode) or  (being in thumbnail mode) icon.



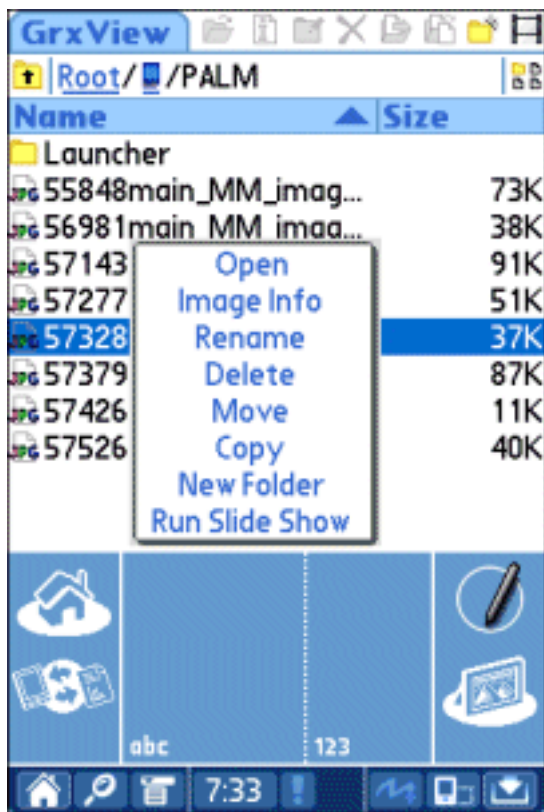
In simple mode file list columns can be sorted — you can sort files either by the name (left column) or by the value in right column, which can be size, resolution, date, type or colors. *Long tap* on the right

columns header to choose its contents.

*Tap* once on the header column, to change sorting order (ascending or descending), or to change sorting column.



Just *long tap* on the file name in the list (push your stylus and hold it for a while) and you get a drop-down list of all the actions, accessible at the moment. You can assign another tap to open that list using File List Options dialog window.



## Toolbar

All the actions available for selected file or folder are shown on a toolbar.



All the icons are accessible from both simple and thumbnail modes.

-  Open

This icon is active only if you have selected an item.

When you select a folder and tap on *Open*, the folder opens. When you select an image file and tap on *Open*, you see the picture.

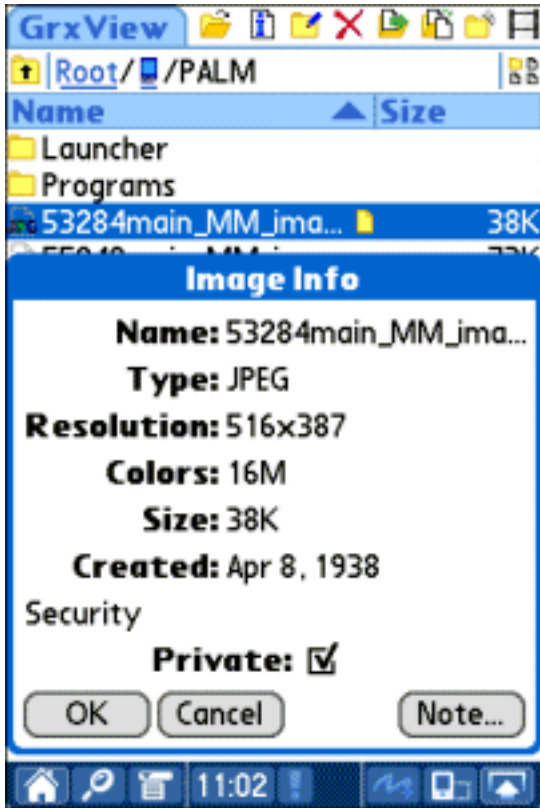
These actions can be performed on a tap. You can tune it in File List Options dialog window.

-  Image info

This icon is active only if you have selected an image file.

Image information gives a clue about different file and image parameters. Attach a note to an image using *Note* button and easily view it by tapping on 📄 icon directly from File List View.

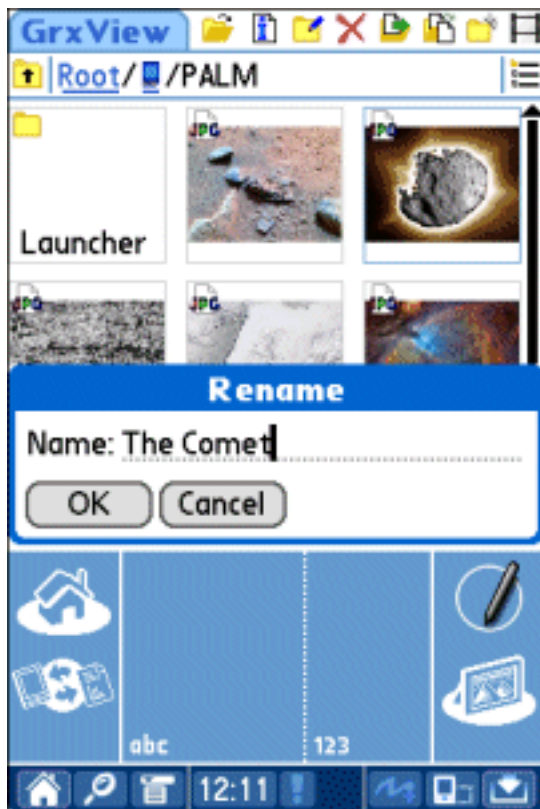
Also here you can check image as private. Security options (show, mask or hide private images) can be set in Change Security form (menu *Options->Security*).



- 📁✎ Rename

This icon is active only if you have selected an item.

Use this command when you want to rename image file or folder.

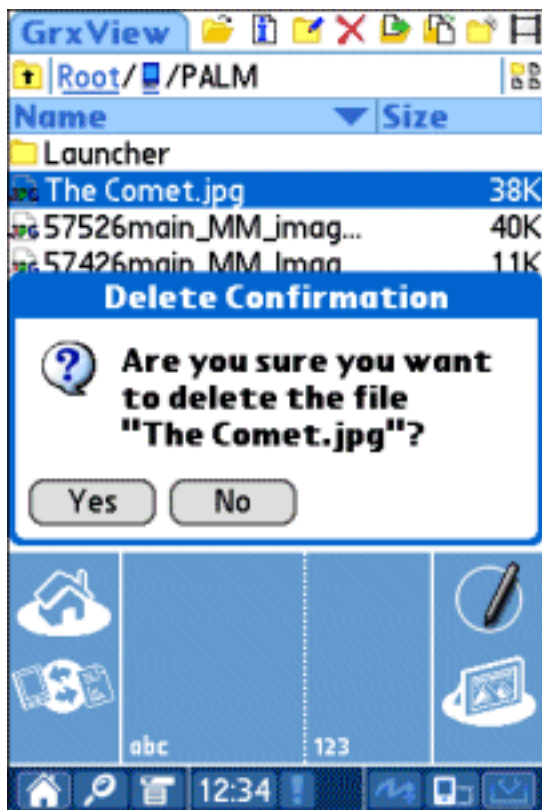


-  Delete

This icon is active only if you have selected an item.

Use this command when you want to delete image file or folder.

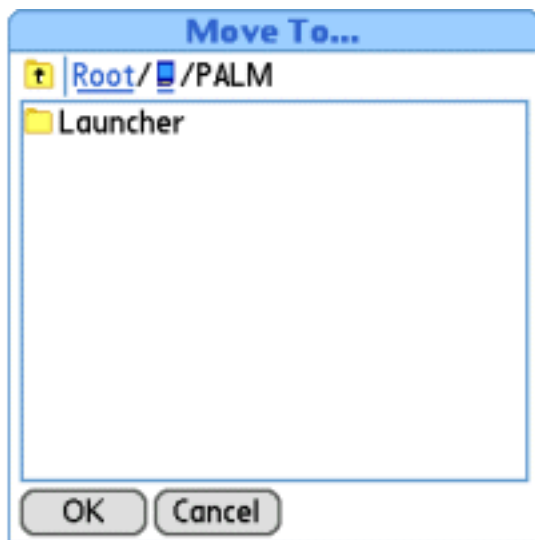
You can remove folder only if it's empty.



-  Move

This icon is active only if you have selected an image file.

Use this command when you want to move image file to another location. You can't move it to the same location.



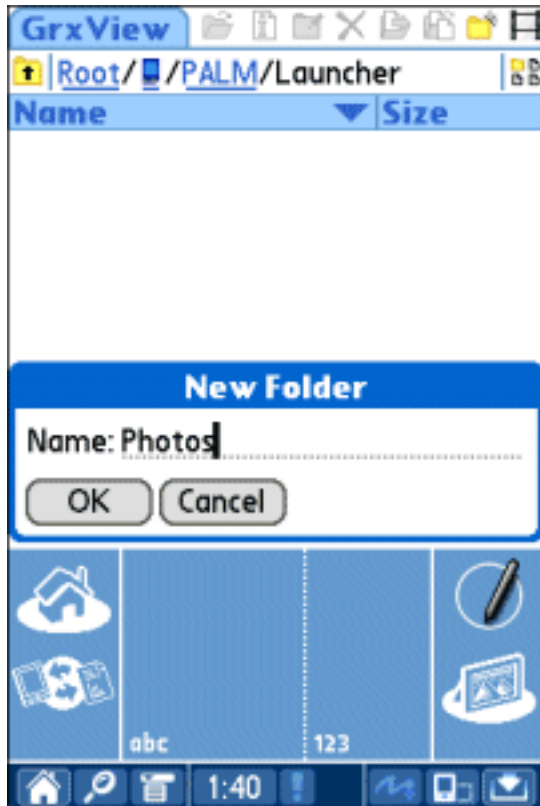
-  Copy

This icon is active only if you have selected an image file.

Use this command when you want to copy image file to another location. You can't copy it to the same location.

-  New Folder

You can create a new folder, if you miss one.



-  Run Slide Show


This command shows sequentially all images in the current folder in full-screen mode, starting from the selected one.

To stop the slideshow just tap once on the picture.

You can enable/disable image auto-rotation mode and tune other Slide Show settings using Slide Show Options form (menu *Options*->*Slide Show*).



## Menu

There are two ways to get to the program's menu: 1st way is to tap form's header, 2nd is to tap the Menu button .

## Image

Image menu represents operations with images. You have to select an image before using them.

- **Beam**

Use it to beam image via Infrared.

- **Send**

Use it to send image via Bluetooth.

## Options

Options menu represents various parameters of GrxView:

- **Image View Options**



These are the options of image view, including common options and options of image loading.

Common options includes:

- Auto Zoom

When Auto Zoom value is set to *Extent* it means, that when you open an image it will be zoomed to fit the screen. If an image is smaller than the screen, the image is going to be enlarged. If an image is larger than the screen, the image will be shrunk.

- Panning

Defines image panning method. *Tap* means tapping on the screen quarters, *Drag* - dragging the image.

- Toolbar State

Defines the initial state of image view toolbar. Select *Show All* to make the toolbar visible by default, *Hidden* or *Show Trigger* - to make it hidden by default (*Show Trigger* makes visible the toolbar trigger).

- Background

Defines image view form background color.

Image loading options includes:

- Loading Scale

Defines the scale factor that will be applied when loading images.

Select *Extent* to improve performance. But in this way zooming the picture will not give you more details. You would need to tap on *Reload* icon to view the image part in maximum resolution.

- Save Image Cache

Defines whether the last opened image cache will be preserved upon exit.

Check it to improve the last viewed image loading time.

- Load Last Image

Check it to open the last image on program startup.

- **File List View Options**



Here you can set font size and tap settings to explore files and folders easily.

Select font size from *Font size* popup list. It can be *Small*, *Small Bold*, *Standard* or *Standard Bold*.

You can assign *Open* and *Menu* (opens the context menu) commands to single, double or long tap. You can do it separately for files and folders.

- **Slide Show Options**



Slide show options include:

- Delay

Defines how many seconds each image of slideshow will be shown.

- Order

Defines an order of the slideshow. You can choose sequential or random order.

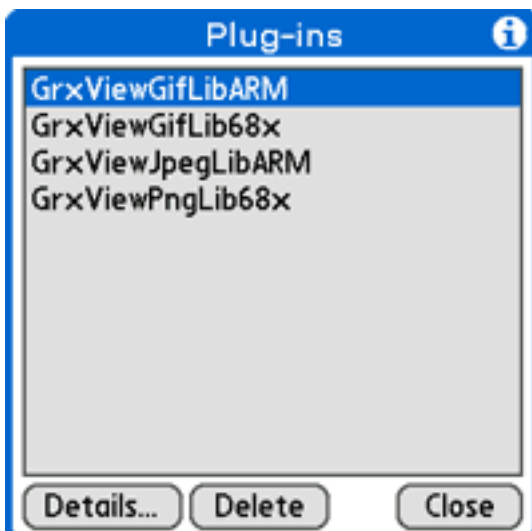
- Show Progress

Check it to enable image loading progress bar display.

- Auto-Rotate

Defines auto-rotation of images during slide show (for non-square screen devices). Set *Right* to rotate wide (vertical screen) or narrow (horizontal screen) images clockwise; set *Left* to rotate them counter-clockwise.

- **Plug-ins**

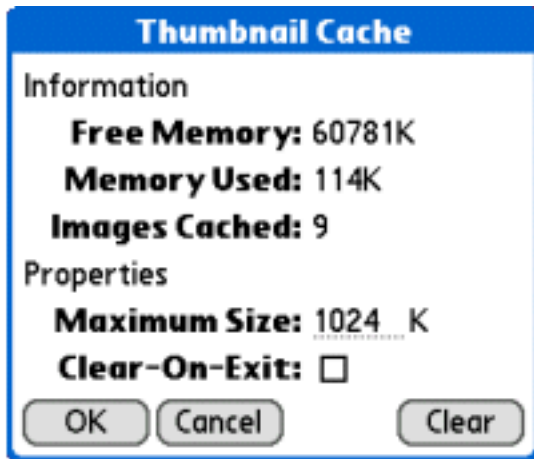


Plug-ins dialog represents a list of all GrxView plug-ins installed. Each plug-in is intended to handle one image file format.

You can remove plug-ins you do not need using *Delete* button.

For plug-ins details push *Details* button.

- **Thumbnail Cache**



Here you can see the information about free memory, memory used for thumbnail cache and cached images. Also you can set maximum size of thumbnail cache and check to clear thumbnail cache on exit the program.

You can clear thumbnail cache using *Clear* button.

- **Image Exchange Options**



Here you can allow GrxView to be a default receiver for all types it supports.

When you check *Receive Images* checkbox all images received via Infrared, Bluetooth or from other applications will be saved in the specified folder. You can set it in *Folder* path selector using "... " button.

## Image View

Unlike the File View, in Image View you can actually *see* image.

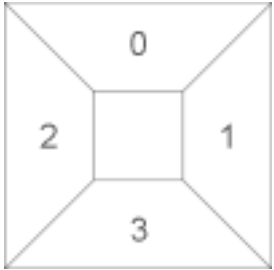
If image is out of borders, you can scroll it by tapping on one of four zones:

0 - scroll up for a half of the screen

1 - scroll right for a half of the screen

2 - scroll left for a half of the screen

3 - scroll down for a half of the screen



Also you can scroll the image by dragging it. This option can be set in Image View Options dialog window.

Little red sign - toolbar trigger - in the down-right corner of the screen un-hides several useful options - just tap it. Also you can make these options available by default using Image View Options dialog window.



-  Reload

Reload current part of the image in maximum resolution. This icon appears only if image was loaded downsampled (if you set "Loading Scale" to "Extent" in Image View Options dialog form or the image is too big to load it at once) and current zoom factor is more than 1x.

-  Rotate left

Rotate image 90 degrees counter-clockwise.

-  Rotate right

Rotate image 90 degrees clockwise.

-  Fit height

Fit image height to screen height. If image is longer than the screen, the image will be shrunk. If screen's height is greater than height of the image, the image will be enlarged.

-  Fit width

Fit image width to screen width. If image is wider than the screen, the image will be shrunk. If screen's width is greater than width of the image, the image will be enlarged.

-  Fit width & height

This tool makes image of the maximum size, when it still fits the screen both by the width and by the height.

-  Zoom in

Increase image zoom factor.

-  Zoom out

Decrease image zoom factor.

-  Zoom factor

Zoom factor shows current image scale. You can change it tapping on the digits. Then you can choose a value from the drop-down list or select *Custom* to set custom scale.